



# Year Eight

March Return to School Handbook

# Welcome Back

As I am sure you are already aware, in line with government guidance, schools will be re-opening to all students from Monday the 8<sup>th</sup> of March. We are therefore delighted to invite your child back into Rastrick to resume face to face teaching from this date.

Throughout the most recent school closure and during the preparation of the schools re-opening, staff at Rastrick have worked tirelessly to ensure that the school is as safe as it can possibly be for all students and staff. We have therefore produced this guide to remind you of the safety measures we put in place earlier in the year, update you on any new changes and hopefully alleviate any concerns you or your child may have about their imminent return.

Firstly, I would like to inform you that our risk assessment has been updated to include the Government's most up to date guidance:

## [RASTRICK HIGH SCHOOL RISK ASSESSMENT](#)

In addition to this, we have also provided the following link through to the Government guidance that has been issued to schools:

## [SCHOOL CORONAVIRUS OPERATIONAL GUIDANCE](#)

If you have any questions regarding the contents of this guide or your child's return to school please contact your year team on :

[Year8support@rastrick.calderdale.sch.uk](mailto:Year8support@rastrick.calderdale.sch.uk)

## Face Coverings

As per DfE operational guidance, students and staff must wear face coverings in all internal areas of school including classrooms, communal areas, offices and workrooms. **It is therefore essential that your child brings their own mask to school everyday day.** Some students may be exempt from wearing a face covering in school, please contact your year team to discuss whether your child will be exempt given the criteria as laid out by the DfE.

For more information regarding Face Coverings in Education please read: [Face coverings in education - March 2021 \(publishing.service.gov.uk\)](#)



## Uniform

When school re-opens, we will expect students to maintain our usual high standards of uniform. If you are unable to meet the uniform requirements, we do have a stock of uniform that can be loaned to students. If you would like more information on the school's uniform policy, please follow the link below:

## [RASTRICK HIGH SCHOOL UNIFORM POLICY](#)

As spring is approaching and the temperature is rising, students will no longer be able to wear their jackets inside the building. Students can wear a plain black V-neck jumper with no branding under their blazers.

## School Day

The school day will revert back to the same timetable we ran before Christmas. On this timetable there will be split lunches and breaks and a staggered end to the day. Please see the timetables for further information.

Period	Year 7, Year 9, Year 11	Period	Year 8, Year 10
Period 1	8:55 – 9:55	Period 1	8:55 – 9:55
Break	9:55 – 10:10	Period 2	9:55 – 10:55
Period 2	10:10 – 11:10	Break	10:55 – 11:10
Period 3	11:10 – 12:10	Period 3	11:10 – 12:10
Lunch	12:10 – 12:50	Form	12:10 – 12:50
Form	12:50 – 13:30	Lunch	12:50 – 13:30
Period 4	13:30 – 14:30	Period 4	13:30 – 14:30
Period 5	14:30 – 15:30	Period 5	14:30 – 15:25

# The School Day

## Travel to school

- Students are encouraged to walk and cycle to school, wherever possible. A lockable cycle storage facility is available behind the Smarties Nursery – please bring an additional lock if you choose to use this facility.
- If you are dropping off or picking up your child, please avoid using Field Top Road (directly in front of school) as we expect a high volume of traffic in this area. Please use a suitable location in the surrounding area. This will help support the smooth movement of students to and from school at these busy times.
- If students are traveling on public transport, they must follow current government guidance. It is a legal requirement that students wear face masks on public transport.

## Arrival

- Students must enter the school through their designated entrance. Supervised spaces will be available for students who arrive early.
- Students must be punctual to school so that they are ready for Period 1 learning; arriving no later than 8.50am.
- Students should arrive to school with a face covering. Students will be required to wear face coverings throughout the school day, in corridors and indoor social spaces when not dining. Further information relating to face coverings can be found on our school risk assessment.
- Students will be asked to use hand sanitiser upon arrival.
- Students must arrive in full school uniform as outlined on the school website.
- As we are unable to lend stationary, students must arrive with all the equipment they require to access their learning – as a minimum, students must have a pen, pencil, ruler and calculator.
- Students will need to bring sports kit on the days that they have PE. All PE will take place outside therefore cold weather kit is advised.
- When moving around the school site and hub areas, students will be required to observe social distancing wherever possible.

## Lessons

- Students will continue to access a broad curriculum; receiving teaching in all their usual subjects.
- The school timetable will remain the same, students will have 5 x 1 hour lessons per day with a 15 minute break, 40 minute lunch and 40 minute form time.
- Students will move around their hubs for different lessons and may be in lessons with students from different forms.
- Students will be in seating plans, allocated by the teachers.
- Students who have been identified for additional or in class support will receive this from our SEN team.

## Climate for Learning

- Staff will continue to use ClassCharts to reward student progress, engagement and contribution. If you are currently not on ClassCharts, please sign up here: <https://www.rastrick.calderdale.sch.uk/classcharts/>
- The school Behaviour for Learning will remain and staff will use the remind, warn, move and remove system to challenge behaviour which does not meet expectations, as outlined in our Rights and Responsibilities.
- Detentions will operate for those students who fail to meet school's expectations. All detentions will be run in year group hubs by the Achievement Team.

## Break and Lunch

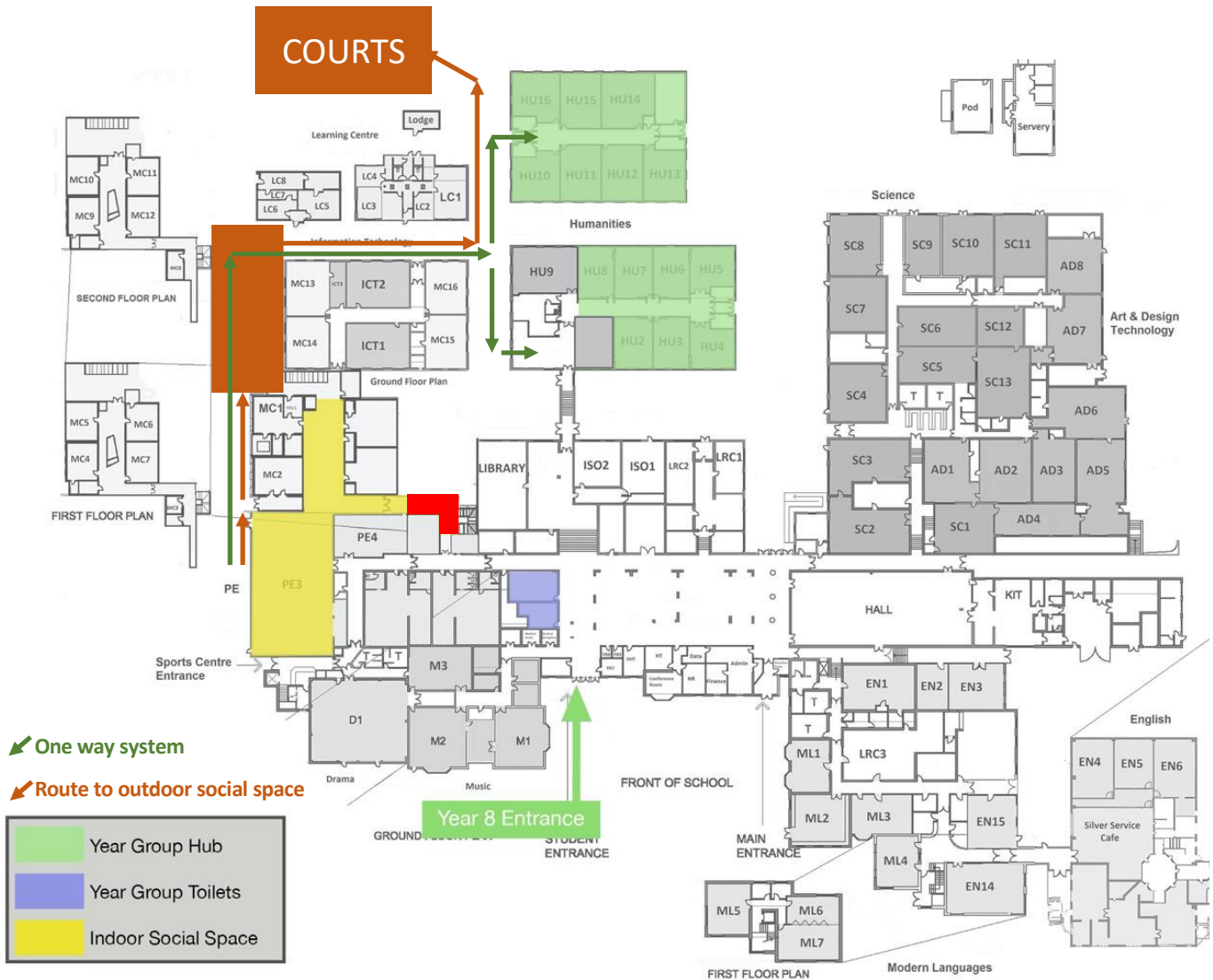
- Break and lunchtimes will be staggered ensuring that students remain within their year group bubbles.
- Year groups will have their own dedicated social, dining and outdoor spaces.
- Food and drink will be available to purchase in each year group hub.

## End of School

- Achievement Teams will be available for students in each year group hub at the end of each day.
- Students will exit the site through the doors they entered through.
- Year groups will leave at different times to reduce student interaction.
- All after school clubs/ enrichment activities will be suspended until further notice.

# Year Eight Hub

Students should take the time to re-familiarise themselves with their hubs prior to re-entry. The map below shows your child's social spaces and shows the routes they should take when moving around the school site.



Year 8 will enter the school through the left doors at student reception.

Year 8 will be housed in the Humanities blocks.

Year 8 will have use of the Lower Gym and the ground floor of Maths during social times.

Year 8 will be able to use the toilets in the main atrium.

During lunch time, year 8 will be able to use the new courts which include 2 football pitches and one basketball court.

Year 8 will be able to purchase food in the Lower Gym and Maths block.